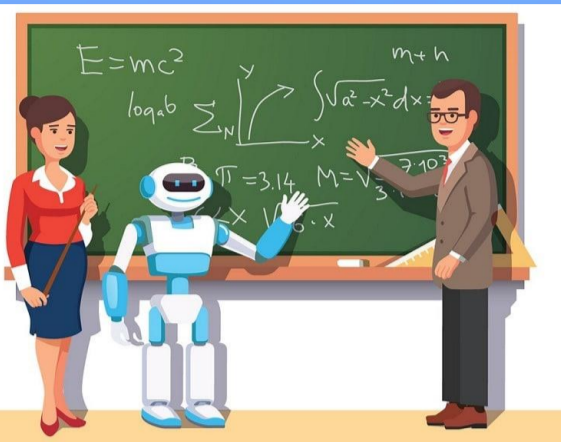


Eduethics in the use of artificial intelligence through prompt engineering

Juditas Delany Torrealba Dugarte

<https://doi.org/10.59654/7j69c731>

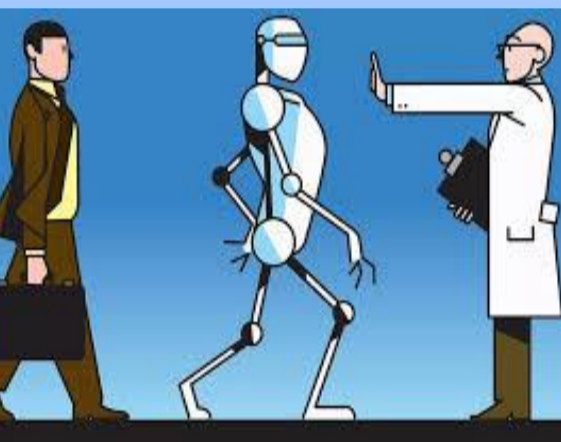
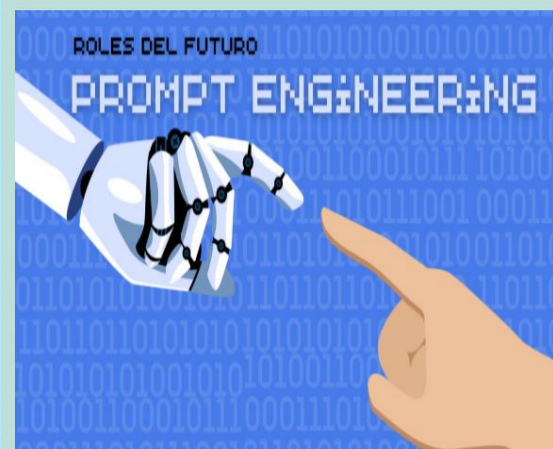


Impact of AI on education

- Growing use of Natural Language Models (NLM).
- Need for AI training in the education sector.
- Risk of distorted use without proper instruction.

Prompt Engineering

- Structured approach to designing interactions with AI.
- Can enhance education and prevent misuse.
- Risk of plagiarism and lack of citation in academic work. Helps create curricula tailored to student needs.

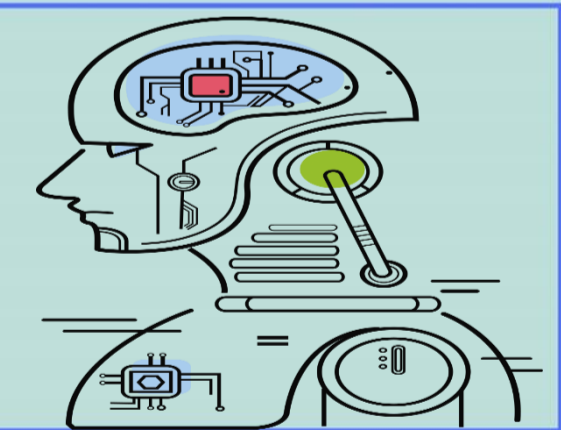


Ethical Challenges

- Risk of plagiarism and lack of citation in academic work.
- Possible relegation of the facilitator to a passive role.
- Concern about the degradation of human reasoning.

Eduethics

- Principles to balance technological advancements and human knowledge.
- Key values: equity, transparency, privacy, responsibility.
- Aims for a balanced interaction between teacher-AI-participant.



Potential Benefits

- Improvement in efficiency and precision across various fields.
- Preparation for the future job market.
- Personalized support for students.

Conclusions and Recommendations

- Educar sobre potencial y riesgos de la IA.
- Educate on the potential and risks of AI.
- Promote critical thinking and authenticity.
- Establish clear regulations for the use of AI in education.
- Create supervision and feedback mechanisms.

